

## PRESS RELEASE - ASI LMC SERIES LABORATORY MEDIA CEILINGS

HEPAire Products Corporation is pleased to introduce the ASI LMC Series Laboratory Media Ceilings and the "UNIMODULE" concept service island modules which are designed to assist in the ever changing laboratory design needs to create the next generation of social adaptable open design transdisciplinary laboratories which can foster team based research interaction while providing a system design balance of flexibility, ease of services expansion and equipment placement, with a forum of pre-engineered standard design elements for integration of today's advanced technologies.



### BASIC ISLAND MODULES



The basic system service island module designs are available for placement of a quantity of six work stations in either 60" or 72" adaptable table module modulation with quantity one end sink station with side storage, waste station, and associated water fixtures, soap dispenser, paper towel dispenser, and peg board holder.

The ceiling element selections consist of LED light assemblies with an integrated central ceiling core service panel section with quick connect service fittings, power and data connections.

Service module end panels contain service chase on sink station side and isolation wall on adjacent end wall.

### COMBINATION ISLAND MODULES



The combination system service island module designs are available for placement of a quantity of four work stations in either 60" or 72" adaptable table module modulation and quantity two back full view research fume hood stations, quantity one isolation zone module (specify type) with quantity one end sink station with side storage, waste station, and associated water fixtures, soap dispenser, paper towel dispenser, and peg board holder.

The ceiling element selections consist of LED light assemblies with an integrated central ceiling core service panel section with quick connect service fittings, power and data connections, exhaust modules, and selected isolation zone modules.

Service module end panels contain service chase on sink station side and isolation wall on adjacent end wall.

### ISOLATION FLOW MODULES



The isolation flow system service island module designs are available for placement of either 60" or 72" adaptable modulation and quantity two isolation zone module (specify type) with quantity one end sink station with side storage, waste station, and associated water fixtures, soap dispenser, paper towel dispenser, and peg board holder.

The ceiling element selections consist of LED light assemblies with an integrated central ceiling core service panel section with quick connect service fittings, power and data connections, and selected isolation zone modules.

Service module end panels contain service chase on sink station side and isolation wall on adjacent end wall.



**COMBINED ENGINEERING SOLUTIONS - ONE CREATIVE VISION**

T: Ottawa : (613) 366-4984 – T: Toronto : (416) 477-4984 – F: (613) 831-4966

120 Terence Matthews Crescent, Unit F1, Ottawa, Ontario K2M 0J1

[www.hepaireproducts.com](http://www.hepaireproducts.com)

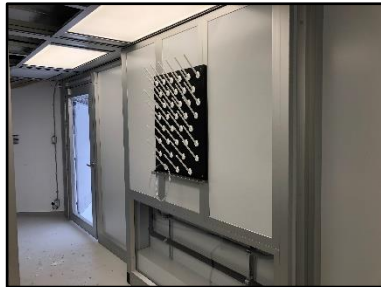
# PRESS RELEASE - ASI LMC SERIES LABORATORY MEDIA CEILING

## END SINK SERVICE MODULES



The end sink service module designs are available for placement of our sleek all modular curved end service sink station for wet applications.

The system features a Vertical concealed pipe/service chase with integrated horizontal open case design service chase connection panels, integrated peg board, paper towel holder & soap dispenser, waste containment and under counter and side storage space for supplies.



## RAPID ROBOTIC TESTING MODULES



The Rapid Testing Isolation Module integrates our CLASS 1 robotic isolation enclosures set in a array for multiple robotic chambers size for your robotic needs.

The system features a Vertical concealed pipe/service chase with integrated horizontal open case design service chase connection panels, integrated peg board, paper towel holder & soap dispenser, waste containment and under counter and side storage space for supplies.

## FUME HOOD MODULES



The Fume Hood Exhausted Module integrates and low flow fume hood design.

The system features a full view panel design with inset sidewall features for placement of services and additional storage allowing for large extended view working interior.

A range of options are available . Consult factory representative for further details.



Hood Size	Duct Size	80 FPM 18" Max Sash Opening		80 FPM 28-1/2" Max* Sash Opening		60 FPM 18" Max Sash Opening		60 FPM 28-1/2" Max* Sash Opening		50 FPM 18" Max Sash Opening		50 FPM 28-1/2" Max* Sash Opening	
		CFM	SP**	CFM	SP**	CFM	SP**	CFM	SP**	CFM	SP**	CFM	SP**
48"	3" x 36"	385	0.05	610	0.07	289	0.04	457	0.06	241	0.03	381	0.05
60"	3" x 36"	505	0.05	800	0.11	379	0.04	600	0.06	316	0.03	500	0.05
72"	3" x 36"	625	0.07	990	0.17	469	0.04	742	0.10	391	0.03	618	0.07
96"	3" x 36"	865	0.13	1370	0.33	649	0.07	1027	0.19	541	0.05	856	0.13

\*28-1/2" max sash opening is recommended for set-up and tear down only.

\*\* Does not include transition.

## COMBINED ENGINEERING SOLUTIONS - ONE CREATIVE VISION

T: Ottawa : (613) 366-4984 – T: Toronto : (416) 477-4984 – F: (613) 831-4966

120 Terence Matthews Crescent, Unit F1, Ottawa, Ontario K2M 0J1

[www.hepaireproducts.com](http://www.hepaireproducts.com)



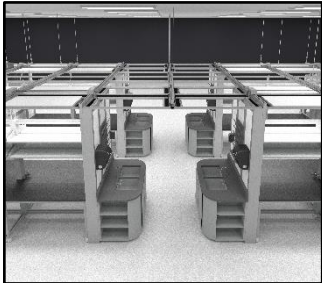
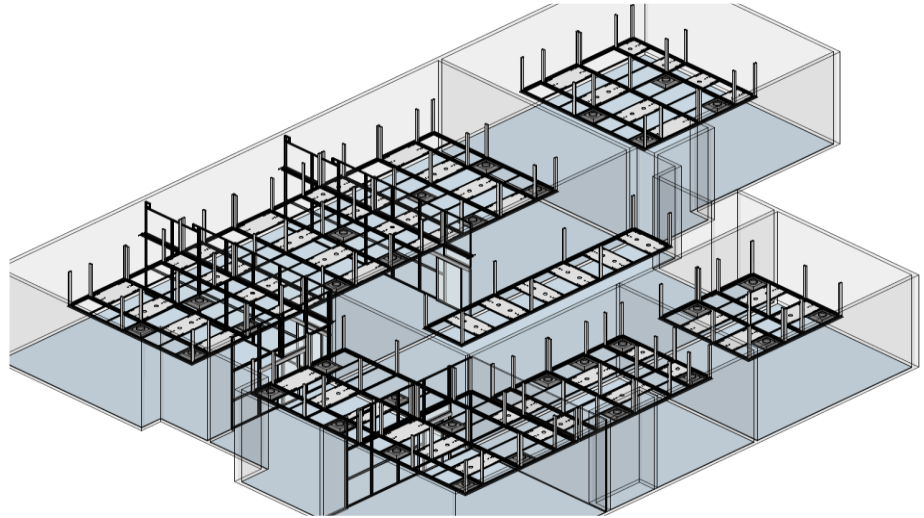
## PRESS RELEASE - ASI LMC SERIES LABORATORY MEDIA CEILINGS

### LARGE SCALE BALLROOM MODULES



The large scale ballroom system service island module designs are available in a range of module layouts to provide the end use medium or large scale laboratory application.

Clients can integrate modules to create a complete working laboratory and can also provide flexibility in facility expansions with the integration of additional modules.



ASI LMC Series Laboratory Media Ceilings offer a clean flexible approach for ceiling utility services providing established technical service pathways while adding integrated capabilities for placement of traditional ceiling elements including drop down in room umbilical service drops, local extraction devices, suspended shelving/casework, and wall partition barrier isolation.



ASI LMC Series Laboratory Media Ceilings form the basic interstitial structure of the laboratory service utilization which provides end users a highly flexible, fast track good balance design approach for laboratory floor space layouts.



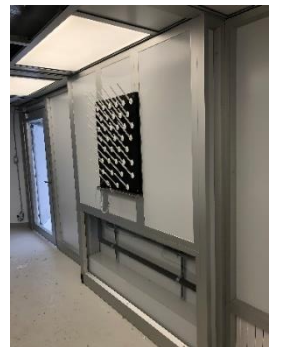
**COMBINED ENGINEERING SOLUTIONS - ONE CREATIVE VISION**

T: Ottawa : (613) 366-4984 – T: Toronto : (416) 477-4984 – F: (613) 831-4966

120 Terence Matthews Crescent, Unit F1, Ottawa, Ontario K2M 0J1

[www.hepaireproducts.com](http://www.hepaireproducts.com)

## PRESS RELEASE - ASI LMC SERIES LABORATORY MEDIA CEILING



**COMBINED ENGINEERING SOLUTIONS - ONE CREATIVE VISION**

T: Ottawa : (613) 366-4984 – T: Toronto : (416) 477-4984 – F: (613) 831-4966

120 Terence Matthews Crescent, Unit F1, Ottawa, Ontario K2M 0J1

[www.hepaireproducts.com](http://www.hepaireproducts.com)

Bulletin 121820.